

Customizing an Output Style

September 2008



Customizing an Output Style

Table of Contents

Overview – Page 3

Getting Started – Page 4

Modifying an Output Style – Page 6

Sharing a Style With Others – Page 10

Customizing an Output Style

Overview

Creating your own output style can seem like a daunting task – however, if you follow these steps, you will find that with a little practice, it is a fairly straight forward process.

One key is good Instructions to Authors (which you have no control over!). The more detailed, the better.

Also, it's always easier to start with an existing style and modify it to suit your needs (when possible).

The best way to learn how to modify a style is to “play” with one. Follow the instructions on the following pages and just practice...You'll be a pro in no time!

So, get ready, get set – GO!

Getting Started

1. Before you begin creating a style, you need to locate the Instructions to Authors for the journal style you want to create (or have any manual ready for the larger styles).

Sometimes, these instructions are difficult to find. We suggest you first do a web search (using your favorite search engine) for the journal you are interested in. Once you locate the journal's website (or the publisher's website), scan the webpage for any of the following terms (this is just a partial list):

- Manuscript Submission
- Author Information
- Instructions to Authors
- For Authors
- Author's Guide

2. Once you have the instructions, read through them carefully. The information you need may be in various sections of the instructions. Some things to look for:

- line spacing for the references- which may or may not differ from the spacing of the manuscript
- should the bibliography start on a new page?
- is there a heading for the bibliography page?
- in-text citations or footnotes and how should those appear? (How many authors should display, how should the names appear, etc.)
- how should the bibliography list be printed (usually in numeric order or alphabetically)

3. After you have read through the instructions, you are ready to look for an existing style to modify. You can do this using the Output Style Preview Utility (Tools, Preview Output Styles) or by simply opening the Output Style Editor (Bibliography, Edit button -- to the right of the output style dropdown).

The Output Style Preview Utility is the easiest way to see both in-text citations and bibliography entries for many reference types all on one page, so we recommend using this tool to locate the style to modify. Since there are many styles to browse through, we suggest trying to find an existing style that may be in the same "area" you are interested in (i.e., Medicine, Humanities, Management, etc.). Also, deselect the option to use your references when previewing output styles. Instead, use our default information to see the most complete definitions of every reference type for each style.

Option to use your references as samples, or RefWorks' data as samples.

Output Style Preview Utility - Microsoft Internet Explorer

File Edit View Favorites Tools Help

Back Forward Stop Home Search Favorites Media

Links Customize Links Yahoo! Yahoo! Mail Add a bookmark Free AOL & Unlimited Internet Web assistant

Search the Web Search Address <http://www.refworks.com/Refworks/OSPreviewer.asp?format=313&selected=0&sampleD=true> Go

Google New Check AutoLink AutoFill Options

RefWorks Output Style Preview Utility

Preview **Chicago 15th Edition (Notes & Bibliography)**

Use References from your account

Abstract

Bibliography: Beutler, Earl Buford, C. Stempien, K. E. Schneider, S. G. Maybo III, Eileen P. Campbell, M. Dunie, and Tina Long. This would be the Title: Primary. Abstract. *Journal of Irreproducible Results* 10, no. 1 (June 19, 2001): 190-199, <http://www.refworks.com> (accessed January 1, 2003).

In-Text Citation: (Beutler and others 2001, 190-199)

Notes: Earl Buford Beutler and others, "This would be the Title: Primary," Abstract. *Journal of Irreproducible Results* 10, no. 1 (June 19, 2001), 190-199, <http://www.refworks.com> (accessed January 1, 2003).

Artwork

Bibliography: Beutler, Earl Buford, C. Stempien, K. E. Schneider, S. G. Maybo III, Eileen P. Campbell, M. Dunie, and Tina Long. *This would be the Title: Primary*. This would be the Title: Secondary., Edited by Bart Simpson, Homer Simpson [Este seria preliminar o t[O]o]. Translated by C. T. Capen, Edited by Daffy Duck. 3rd ed. Vol. 10. Encinitas: SIMD Publishers, 2001, <http://www.refworks.com> (accessed January 1, 2003).

In-Text Citation: (Beutler and others 2001, 190-199)

Notes: Earl Buford Beutler and others, *This would be the Title: Primary* [Este seria preliminar o t[O]o], ed. Daffy Duck, trans. C. T. Capen, 3rd ed., Vol. 10 (Encinitas: SIMD Publishers, 2001), 190-199, <http://www.refworks.com> (accessed January 1, 2003).

Bills/Resolutions

Bibliography: Capen, C. T. *This would be the Title: Primary*. 10. 1 sess. *Journal of Irreproducible Results*, no. 3, This would be the identifying phrase(June 19, 2001): 190-199, <http://www.refworks.com> (accessed January 1, 2003).

In-Text Citation: (Beutler and others 2001, 190-199)

Trusted sites

Output Style Preview Utility

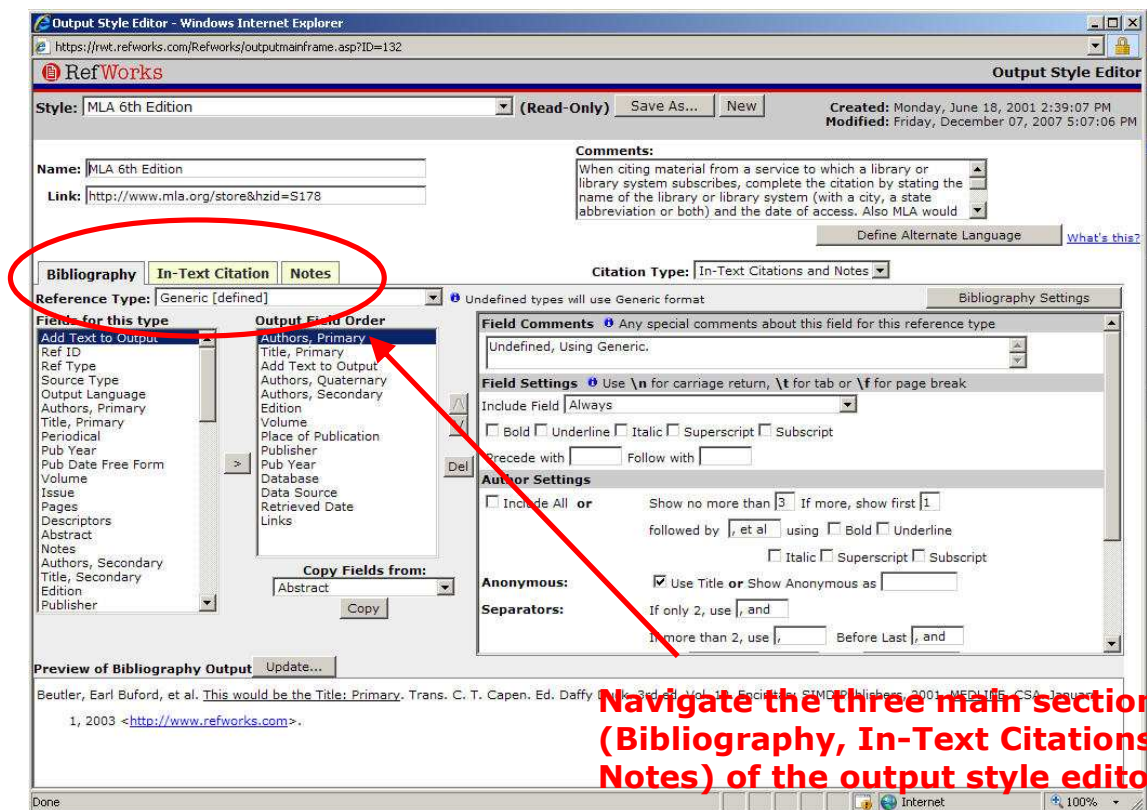
4. Once you have found a style to modify, you will need to access the Output Style Editor to make any modifications. To do this, go to the **Bibliography** area. Select the output style you wish to modify from the drop-down and click the **"edit"** button to the right of the drop-down. This will launch the Output Style Editor.

Modifying an Output Style

The Output Style Editor has three main sections – in-text citations, bibliography and notes (footnote or endnote). You have to set up each section that is appropriate for your desired output. The output style editor always opens to the bibliography section.

Tip: The RefWorks online help has detailed information on each of these three sections (check the section called Using the Output Style Editor). We suggest you read through the help files for a thorough understanding of all the options available to you.

Here's how the output style editor looks when you first open it:



You can access each of the three sections by clicking on the appropriate tab. For each of the three sections, there are two components:

- **The Settings:** There are overall settings for the Bibliography, the In-Text Citations and the Notes that determine line spacing, headings, sort order, etc. You determine the settings for each area as necessary.
- **The Format:** Each of the three areas (Bibliography, In-Text Citations and Notes) can have defined formats where you decide exactly which fields of information are used, the order of the fields, as well as any punctuation, spacing and text attributes for every reference type you need to have for your final output (i.e., a book, a journal, a web page, a dissertation, etc.).

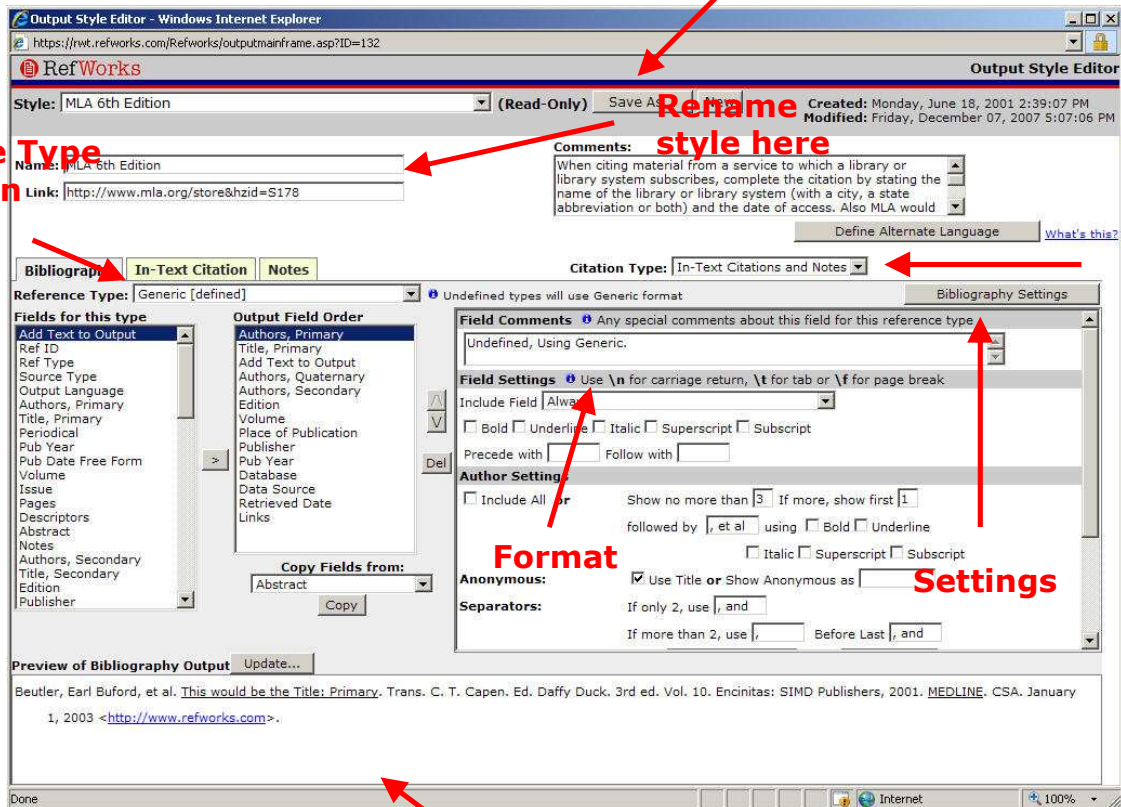
All of these items need to be considered when creating or modifying a style.

First time, select **Save As**,
after that, just use **Save**

Reference Type
drop-down

Rename
style here

Citation Type



Preview

1. Before you start to modify the style you have found, we suggest renaming it (it cannot be the same name as the original) and saving it. In the area that says **Name** (located just below the output style drop-down), type in your new name and click the **Save As** button located near the output style drop-down..
2. Your new style will now appear in the output style drop-down in red lettering (note: Not all browsers support the display of colors in the drop-down. Only you will see this style in your personal account.

Now that you have located a style and renamed it, you are ready to modify it to meet your needs.

- Remember, there are two components to each style -- the Settings and the Format. You will need to check and/or modify any or all settings and defined formats to suit your needs.

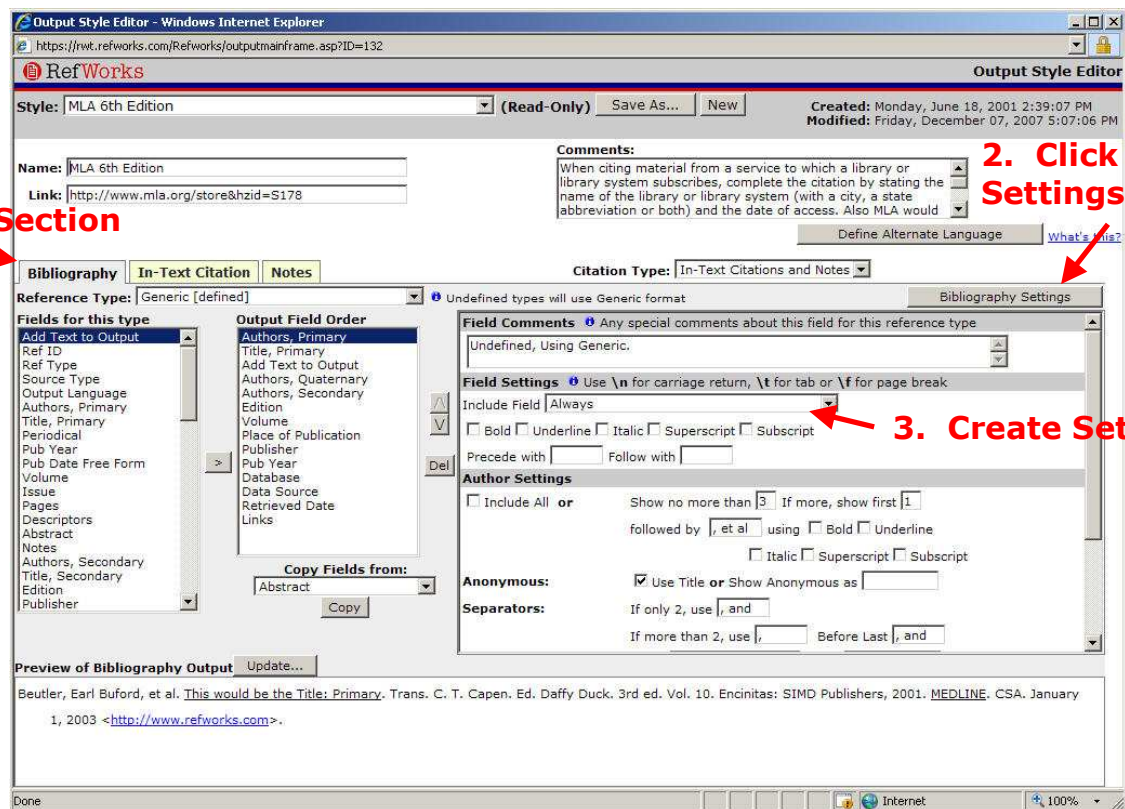
To modify a style you will:

- Check the **Citation Type** to make sure it is appropriate for your output style.

- For In-text citations with a bibliography at the end of the paper, select **In-Text Citations Only**.
- For Notes at the bottom of each page or at the end of your document, select **Notes Only**. This feature works with your Word Processing software's footnote/endnote feature.
- For a combination of in-text citations and footnotes, select **In-Text Citations and Notes** (also includes a bibliography if needed).

- Check the **Settings** (determine the overall layout and spacing and whether in-text citations are numeric). **Note:** In-text citations that are author-date are defined similarly to Formats (below). You will select fields and apply punctuation. Numeric in-text citations do not require any fields to appear in the **Output Field Order** column.

To access each of the Settings areas, you first select which section you want by clicking on the appropriate tab, then click on the Settings button and finally, create the settings.



- Check the **Formats**. Formats are created for each reference type example that is provided in the instructions to Authors. At a minimum, you MUST create a Generic format. To see which formats have been defined already, click on the reference type drop-down (located just above the Output Field Order box) and wherever you see **[defined]** next to a reference type, this is what the output style is using. At the bottom of the output style editor, you will see a preview pane. Changing the reference type from the **Reference Type** drop-down located above the **Fields for this Type** and **Output Fields Order** boxes will change the preview pane.

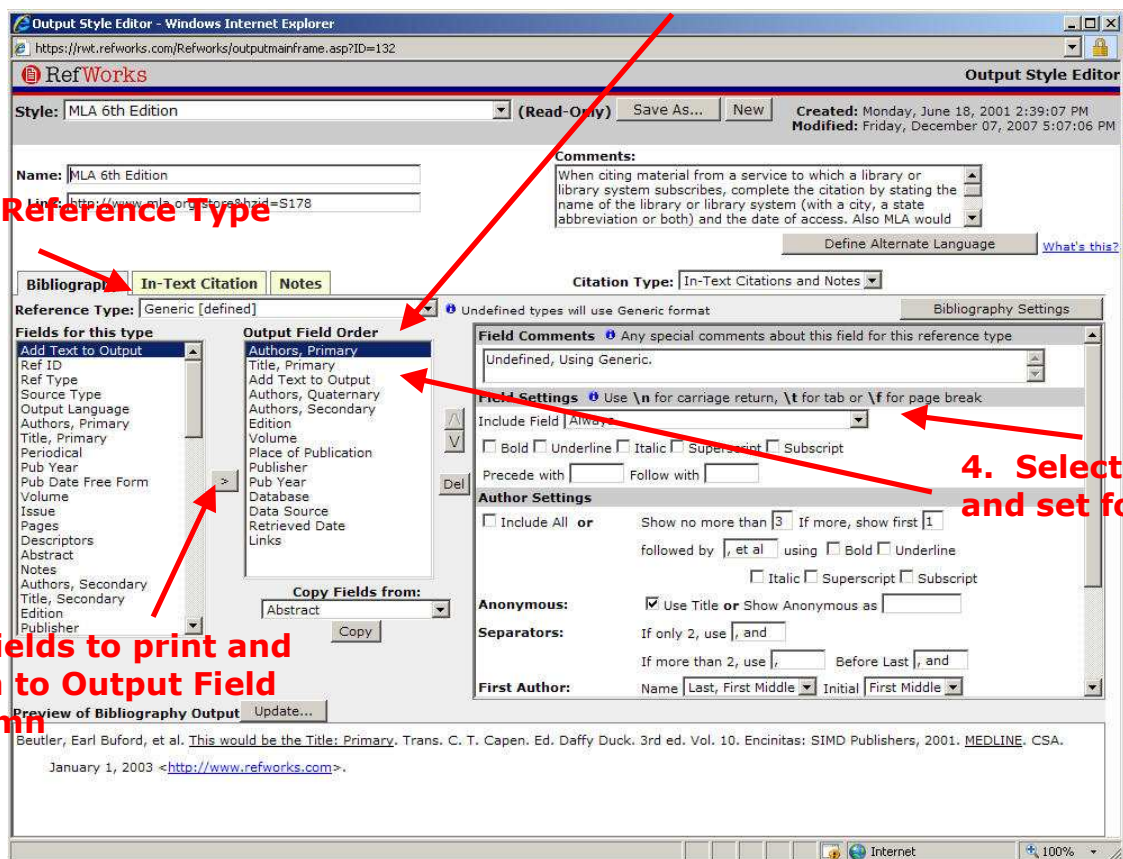
Reference types that do not say [defined] next to them use the Generic format.

Remember, detailed information on formats and settings for each of the three sections (Bibliography, In-Text Citation and Notes) is available in the online help.

Tip: Make sure your final reference type format matches the examples in the Instructions to Authors. Look for the proper order of the elements, as well as punctuation and text attributes (bolding, italicizing and underlining) where appropriate.

Click on any of the individual fields in the **Output Field Order** box to change any established formatting. Each field will have its own **Field Settings** that you can modify. You can also use the up and down arrow buttons or the **del** buttons to change the order of the fields or remove a field completely. For details about the individual **Field Settings**, see the online help.

3. Place fields in proper order.



3. Once you have checked and modified your formatting, make sure to save your changes. To locate your new style, click your browser's refresh button or click on the **Bibliography** button in RefWorks to load the updated output style selections. Custom output styles are automatically added to the Output Style Manager and will be displayed in red type. We suggest you generate a trial bibliography using your new style in the **Bibliography** area of RefWorks or view your style in using the **Output Style Preview Utility** (click on the **Preview Styles** button in the **Bibliography** area). Make sure you have references in your RefWorks database that will produce good results (i.e., complete records in a variety of reference types!)
4. Check the formatted citations and references. To make any further changes, locate the name of your output style in the **Bibliography** area of RefWorks and click on the **Edit** button.

Sharing A Style With Others

Once you've created a style, how do you share it with other users? Well, There are two options for sharing output styles:

- Share one-to-one
- Post for all users in an institution.

Sharing One-to-One

Any user can use the Backup feature (Tools, Backup/Restore) to export an output style (or styles) and email the style to other users (who would then use the Restore feature to put it in their account).

The screenshot shows the RefWorks web interface in Microsoft Internet Explorer. The browser title is "Refworks Web Based Bibliographic Management Software - Microsoft Internet Explorer". The address bar shows "http://www.refworks.com/Refworks/mainframe.asp". The RefWorks logo is visible at the top left, and the user is logged in as "Stephanie". The navigation menu includes "References", "Search", "View", "Folders", "Bibliography", "Tools", and "Help". The "Tools" menu is expanded, showing "Backup/Restore".

The "Backup/Restore" page has two radio buttons: "Backup" (selected) and "Restore". Below this, there are checkboxes for "Include References" and "Select Output Styles to Backup:". The "Select Output Styles to Backup:" section has two columns of checkboxes. The first column includes "Academy of Management Review SF", "Advances in Physiology Education SF", "AJP - Part and Circulation SF", "BAMS - Bulletin of the American Meteorological Society SF", "BibTeX - RefWorks ID*2", "BibTeX SF", "Canadian Journal of Forestry", and "IEEE - Institute of Electrical and Electronics Engineers, Hari". The second column includes "MLA 6th Edition my way", "Nurse Practitioner Journal", "Organization Science 2", "Organization Science 3", "SF APA, Annotated with Abstracts - American Psychological Association, 5th Edition", "sf Chicago 15th Edition (Notes & Bibliography)", "Uniform", and "Veterinary Dermatology".

Red annotations are present: "1. Choose Backup option" points to the "Backup" radio button; "2. Check styles to share." points to the "Advances in Physiology Education SF" checkbox; "3. Click Perform Backup button to save .zip file to your computer." points to the "Perform Backup" button.

Posting an Output Style for All Users in an Institution

The RefWorks Administrator can post a style for all users in their subscription to access. Contact your local RefWorks Administrator if you are willing to share your creation with others at your Institution – save your colleagues effort and time. We are sure they will appreciate your hard work!